

WHATS ON
May Exhibition at Red Tree Gallery Ross Vanner
May 1st Jindi Jems
May 9th JPA and Hall Committee Meeting 6.30pm Jindi Hall
May 22nd Australia's Biggest Morning Tea Jindi Hall 11.30am-3pm

If you would like to include information about a local event, club, person etc please contact the editor by email via: newsletter@jindivick.org.au or phone 0417 188 694.

The deadline for the June 2024 newsletter **20th May**

This Newsletter is published by the Jindivick Progress Association.

We acknowledge the Traditional Owners of this land and pay our respect to their Elders past, present and emerging.

Regular Events

St James Anglican Church, Jindivick Services on the first and third Sundays of the month. The Service begins at 11.30: we gather for a cuppa and a bickie a bit earlier. Further details, ph Faye 0400 014 226

Atticus Health, Jindivick Make an appointment at: www.atticushealth.com.au/location/jindivick-medical-clinic or call the clinic on 56 285 445 Open Mon—Fri 9-4:30. Sat & Sun 9-3.

Jindi Craft Group Meets in the Hall, Thursdays, 11am—4pm phone Nikki Cadzow 0447 776 178

Jindivick Hall To book go to www.jindivick.org.au/bookings

Jindi Jems Will meet 1st Wednesday each month at the Barn. If you'd like to join us please call Maz Ph 0447 491 502

Jindivick Knitting Group Meets on the 2nd and 4th Tues of the month at **The Barn Café**. from 10-12. Don't knit? Don't worry, just join us for a cuppa and a chat. Call Maz on 0447 491 502

Jindivick Pool Nights Friday nights contact to be advised.

Jindi Writers Group Meets on Wednesdays 11am at the Red Tree Gallery. No experience necessary. BYO lunch, pen and paper. If you'd like more info call Mandy on 0419 384 600 or Amanda 0417 188 694

NANGARA NEWS

Senseless vandalism of 2 sculptures by Graham Duell took place in Nangara Reserve 6 weeks ago.

Works known as "Kitty Johnston and Dairying" were the targets.

Luckily for our community, Graham was able to repair these pieces, and we're very grateful for his time and expertise.



JINDI JEMS

Will meet at Sherwood Park Orchard's new rotunda. On Wednesday 1st May
 Call Maz for details on 0447 491 502



ANZAC Day in Jindivick report



St James Church



seasons come and seasons go but God goes on forever. Hey so can you! Great news. Come and hear all about it at St James on any first or third Sunday of the month at 11.30 am. See you there soon.

Jindivick Writers Group— Challenge to turn a (or more) nursery Rhyme (s) into a story that is either comedy or horror. (Phill came up with the following in two parts. WARNING DO NOT READ TO YOUNG CHILDREN. You will have to agree, we had great fun with this.

NURSERY RHYME HORROR— PART 1 (Phill)

Little Miss Muffet had to make do with a footstool as there were no tuffets in Old Mother Hubbard’s dining room. But there were spiders, lots of them, waiting patiently in the shadows.

The two Marys were there too; the contrary Mary, and the Mary with the little lamb. Jack and Jill sat together of course, still unable to keep their hands off each other even after all these years. Georgie Porgie just looked impatient. Not content with the dinner he had just eaten, he wanted to get into the pudding and pie without delay, and he was sick to death of listening to Old MacDonald drone on and on about his damned farm.

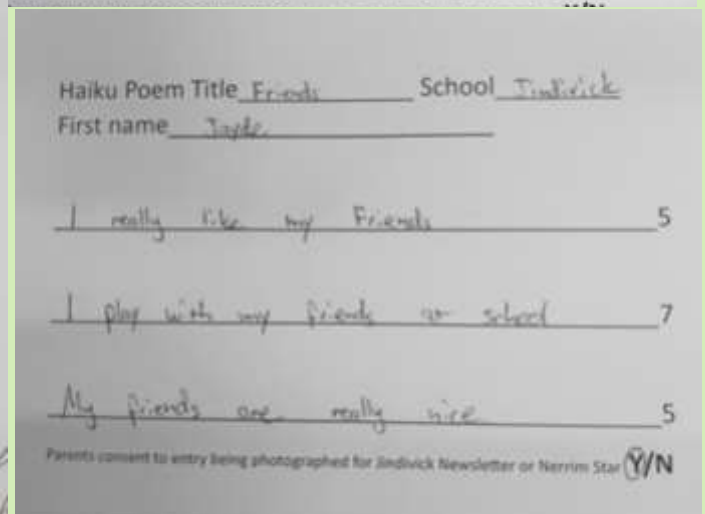
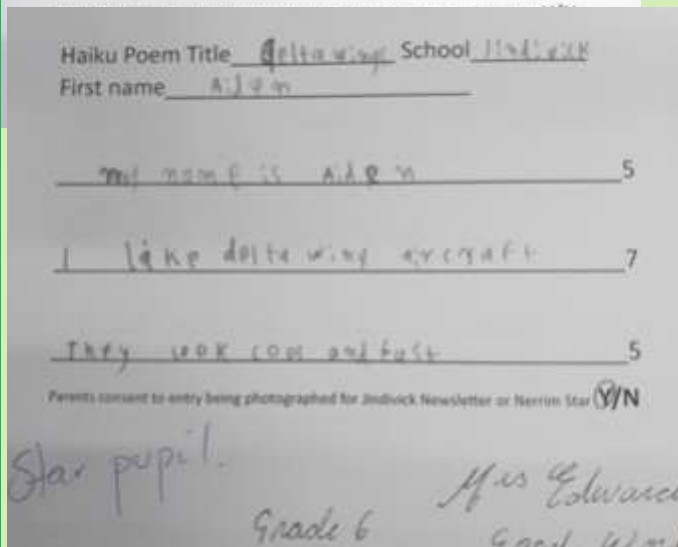
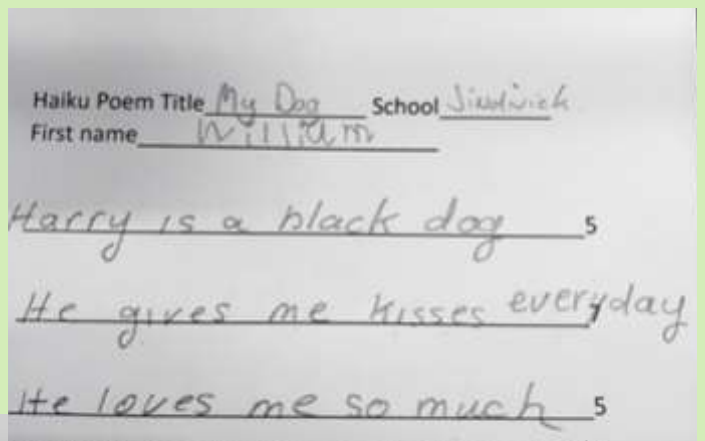
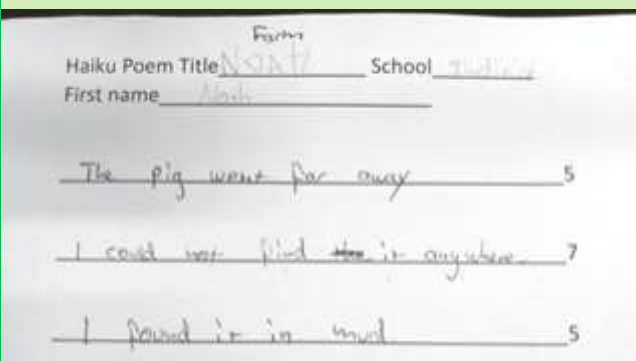
Old Mother Hubbard surveyed the scene, happy that all her victims – I mean guests – had accepted her invitation despite knowing full well that her cupboard was bare. Any irritation she felt was tempered by the knowledge that before the night was over, there would be plenty of bones for her poor dog to feast on.

They had all enjoyed the roast that Old Mother Hubbard had prepared; I mean who doesn’t love roast lamb with garlic and rosemary and home-made mint sauce. Admittedly the portions were on the small side but that’s what you get from a little lamb, a little lamb that would never ever follow Mary to school again.

Old Mother Hubbard promised dessert would soon be served but first a toast and with that, she topped up everyone’s champagne. She then invited everyone to raise their glass and proposed the toast.

Part 2 next month...

Below are a few of the entries from students in the Haiku poems at the Jindivick expo. Well done to everyone who attempted this.



Mist shrouds the valley	Shrill black cockatoos	A Couple of Autumn Haiku Poems by Margaret Ponting
gum trees giant silhouette	beaks splitting banksia cones	
autumn’s quiet magic	yellow-tail’s picnic	

More than \$43 million for community projects headlines Draft Budget

Published on 18 April 2024



Baw Baw Shire Council is inviting the community to view and share their thoughts on a suite of key draft documents, including the Draft Annual Budget, which will guide Council's investments and priorities for the upcoming financial year.

On exhibition from Thursday 18 April through to Wednesday 8 May, the key documents include the Draft Budget 2024/25, the Draft Long-Term Infrastructure Plan, the Draft Council Plan 2021-2025 Annual Review, the Draft Rating and Revenue Plan and the Draft Long Term Financial Plan.

It is the final budget of a Council term defined by the delivery of several major long-term projects, including the ~\$12.5 million Warragul Leisure Centre Stadium Expansion, the \$4.1 million upgrade of the Drouin Recreation Reserve Oval and the delivery of the Rollo Street Masterplan project in Yarragon, which will see the repurposing of the site of the old Yarragon Primary school into a valuable community open space with a shared loop path, shelter, park furniture, interactive play area, information signage, artwork, raised garden beds and established trees.

In 2024/25, Baw Baw Shire Council will continue to build on its **plan, design and deliver** approach, investing in important services and infrastructure to ensure a healthy and thriving community now, and into the future.

Council's \$43 million Capital Works Program details an exciting array of community projects happening across the Shire in the next 12 months, from major road upgrades to playground renewals, and refurbishments to popular community facilities.

This year also marks the final year of the current Council Plan, meaning some exciting opportunities for our community to join Council in the development of the next plan, are just around the corner.

Highlights of the 2024/25 Draft Budget include:

- Baw Baw Culture and Connection Precinct Stage 1 - \$5.00 million (subject to grant funding) (Total Project Cost \$30.00 million)
- Rokeby Noojee Trail - \$2.10 million (Total Project Cost \$4.00 million)
- Rollo Street Masterplan - \$1.00 million (Total Project Cost \$2.00 million)
- Warragul Streetscape Works - \$1.90 million
- Drouin Recreation Reserve – \$3.62 million (Total Project Cost \$4.10 million)
- Copelands Road Upgrade - \$1.52 million (Total Project Cost \$4.60 million)
- Gravel Roads Sealing Program - \$1.75 million

Baw Baw Shire Mayor Cr Annemarie McCabe encouraged residents to maximise this opportunity to play a role in Council's decision making by having their say on these important draft documents.

"This community engagement is a great opportunity for residents to share with us what their priorities are. Your input truly matters and is crucial to the process so Council can ensure it hits the mark and delivers what our residents want and need," the Mayor said.

"This year, Council continues to balance delivering and providing our community with the services and infrastructure they depend on, while also navigating a somewhat unpredictable and high-cost economic environment."

"Our Shire has a population of more than 62,000 residents, which is projected to grow to nearly 88,000 by the year 2041, meaning its more important than ever before to responsibly manage our budget to ensure we're investing not only now, but into the future as well."

For the first time this year, Council has an added challenge following a recommendation by the Minister for Local Government that local Council's restructure their waste charge.

To align with best practise measures, Baw Baw Shire Council elected to follow this advice, despite it forcing Council to absorb more than \$10 million in additional costs over the next 10 years. This is due to Council no longer being able to fund services such as street, footpath and kerbside drain cleaning and the provision of public bins from the funds sourced via the waste charge, but instead it will now need to fund these from other revenue sources.

Residents can expect to see a reduction in their waste charge this year. However, while the cost to residents will appear lower, the cumulative cost to Council from the State Government's advice will have impacts on future budgets.

Cr McCabe said that despite this added challenge, Council continues to prioritise the needs of the community above anything else and invited residents and business owners to join Council in advocating to other levels of government for support.

"It's clear how quickly our community is growing and changing and I'm urging anyone who lives, works or visits Baw Baw to join our advocacy campaign and call on the state and federal governments to inject more funding into our area to support Council in providing the added services and resources needed by our community."

To have your say, your way, head to www.bawbawconnect.com.au/budget.

Submissions may also be made:

- In writing and posted to Baw Baw Shire Council, PO Box 304 Warragul 3820

Via email to Budget.Submissions@bawbawshire.vic.gov.au

Submitters that wish to do so will have the opportunity to speak to their submissions at a Special Council Meeting on Wednesday 15 May 2024.





Local Bush Walks. (Cone Rock Labertouche)

Drive out Forest Rd to the bush just past the High Voltage power lines turn right up to the parking area (leave room for horse floats to turn around). Walk around the gate with the cavaletties and up the hill to the T intersection (moderately steep). Turn left when you get to the next intersection (top left) take the right fork up to the lookout. When you come back take the other track down under the powerlines back to the pipeline and turn left back to the car. This walk is moderate and took me 1hr 10 minutes including doggy stops. Dogs need to be on a lead and take your rubbish as there are no facilities. *I went at dusk and it was lovely.*



ANZAC DAY SERVICE JINDIVICK 2024

What a wonderful ANZAC Day service we had in Jindivick Today. Approximately 100 people attended another fabulous service, with Kathryn as MC and her father Terry Bourke giving an emotional welcome speech. The Drouin West CFA telling us the story of ANZAC Ted, Jindivick Primary reciting Flanders Fields and their choir sung beautifully. With some of the congregation joining in with the National Anthem. Congratulations to all involved, truly a country service to be proud of. The Council had repaired the rope for the flag and the RSL provided a new flag. Following the service many returned to the Hall for a cuppa and ANZAC biscuit, made by Anita (who promised to send her recipe in time for everyone to bake next year).



Crowed assembling 15 mins prior

JINDIVICK PRIMARY SCHOOL NEWS

Here at Jindivick Primary we have had a great start to our Term 2.

Our end to term 1 was incredibly busy with both our junior and senior sports carnivals, every student tried their best and we saw some outstanding athletic achievements. It was lovely to see our year 3-6 students supporting the juniors from both Jindivick and Labertouche Primary as they rotated through a jam-packed day of activities. We also had an amazing easter egg hunt on our last day and our Junior School



Council raised over \$60 from the dress up day to donate to the Drouin West CFA. A great achievement by all of the students.

Our 2025 Prep enrolments are now open if you have a child ready to start school next year or know someone who might be interested, please get in contact with our school to arrange a tour on 5628 5293.

Our Wombats Are Suffering and Dying - But We CAN HELP!

Mange is curable.

No doubt you've seen wombats looking very unhealthy - scabby, patchy, crusty-skinned; even blind and wandering around in the daytime, seemingly 'unafraid' of humans. This is due to mange infestation, not a disease, but a mite. I've had the sad experience of having a wombat euthanised because it was too late to help it. It IS, however, treatable in its early stages. Recently, I got in touch with Mange Management Victoria, an organisation trying to tackle this awful problem. They were able to give me detailed information and instructions on how to treat a mange affected wombat. I collected a treatment pack from vets in Drouin. **Please check out the Mange Management website to find out more and how you can do your bit, as a rural resident, to reduce the suffering and loss <https://mangemanagement.org.au/>**

Mange Management, working together with Landowners, Landcare Groups, Friends Groups, in fact anyone interested in helping wombats with mange is an ideal way to reach affected areas. Our aim is to effectively treat mange and stop the unnecessary and cruel suffering.

We can't as a responsible nation let mange continue its destruction of the wombat population. By doing nothing we ensure that not only will any wombat catching mange die, but we allow it to spread amongst all wombats.

The plight of wombats with mange has been an ongoing concern for many years. Unless mange is treated the infestation progresses and eventually the wombat is so severely compromised it dies.

Mange Management distributes free mange treatment kits and provides education, advice and support to landowners, volunteers and the wider community, enabling them to effectively treat wombats that would otherwise suffer and die from the cruel symptoms of mange.

Mange is not a disease but an infestation of the mange mite. The female mites burrow under the skin where they deposit eggs, these hatch and cause intense discomfort. Over time thick plaques that look like scabs and ridges form over the wombat's body. These scabs become dry and split open, the wounds can then become flyblown and infected. The plight of wombats with mange has been an ongoing concern for many years and is an animal welfare issue. Unless treated the infestation progresses and eventually the wombat is so severely compromised it dies a slow and agonizing death. Mange mites also spread to other animals, including horses, dogs, wallabies and so on. It is not known exactly where mange came from.

It may have been introduced by early settlers as scabies or during settlement with the introduction of foxes and domestic dogs. What we do know is, it has spread throughout our wombat population, affecting the bare nosed wombat in particular. Mange is usually evident by crusty ridges around the wombat's shoulders, sides and legs. Scabs can also form around the wombat's eyes and ears and the wombat may appear to be blind and deaf. Hair is usually still growing down the centre of the wombat's back and rump and is often referred to as a 'mohawk appearance'.

A wombat with severe case of mange mite infestation



The same wombat, looking much healthier, after treatment



JINDIVICK COUNTRY MARKET

The April market was a great day and the last for the season and our market coordinator Don Lesson. We would like to thank Don for all he has done over the past 8 years for the market he has been a great asset to the market and the community and to Jenny for her support of Don and being the best host to our stall holders each market supplying them with tea and coffee.

So we are looking for community support to keep the market going, it was a huge job for Don and Jenny to achieve each market and it has been decided, to break the organization of the market into small tasks, with one person responsible to coordinate the group.

The Jindivick Progress Association are responsible for the market, it runs 6 times a year, October, November, December, February, March, April, and has around 30 to 40 stalls, it is a fundraiser for the CFA and the JPA. Its also a place for locals to meet and catch up and enjoyed by many.

The market will be discussed at the next JPA meeting on Thursday May 9th 6.30 pm at the Jindivick Hall. If you would like to be involved it would be great if you could come or contact Nikki to discuss

Tasks Market Coordinator.... Work with group to make sure a smooth running of the market, putting out road signs on Sunday before market and picking up after market on the Saturday.

..... Stall holders.... All things to do with stalls, contact stall holders before markets, allocation of stall sites, collect fees and other information (insurance). Saturday morning (early) meet stall holders and show where to set up

.. Set up FRIDAY... mark out stall places inside and out, put out tables and chairs where needed, bollards down, rubbish bins, BBQ and table out for CFA.

..Pack up SATURDAY... clean up stall set up, table chairs away, bollards up and rubbish bins emptied.

SET UP PACK UP COULD BE ONE.

.... AdvertisementGazette, face book and other, Flyers to markets, Glen Cromie, Notice boards around local towns, Jindivick Newsletter article. And other place as required.

All these tasks are up for discussion and we can change as needed.





**ARE YOU
ABLE TO HELP WITH OUR JINDIVICK
COUNTRY MARKET?
Come to the next JPA meeting
Thurs 9th May 6.30pm
For info please ring Nikki on
0447 776 178**





Jindivick Newsletter April 2024



Drouin West CFA

Keeping Our Communities Safe.

Upcoming plan burn with FFMV at Labertouche-Robertson Creek area

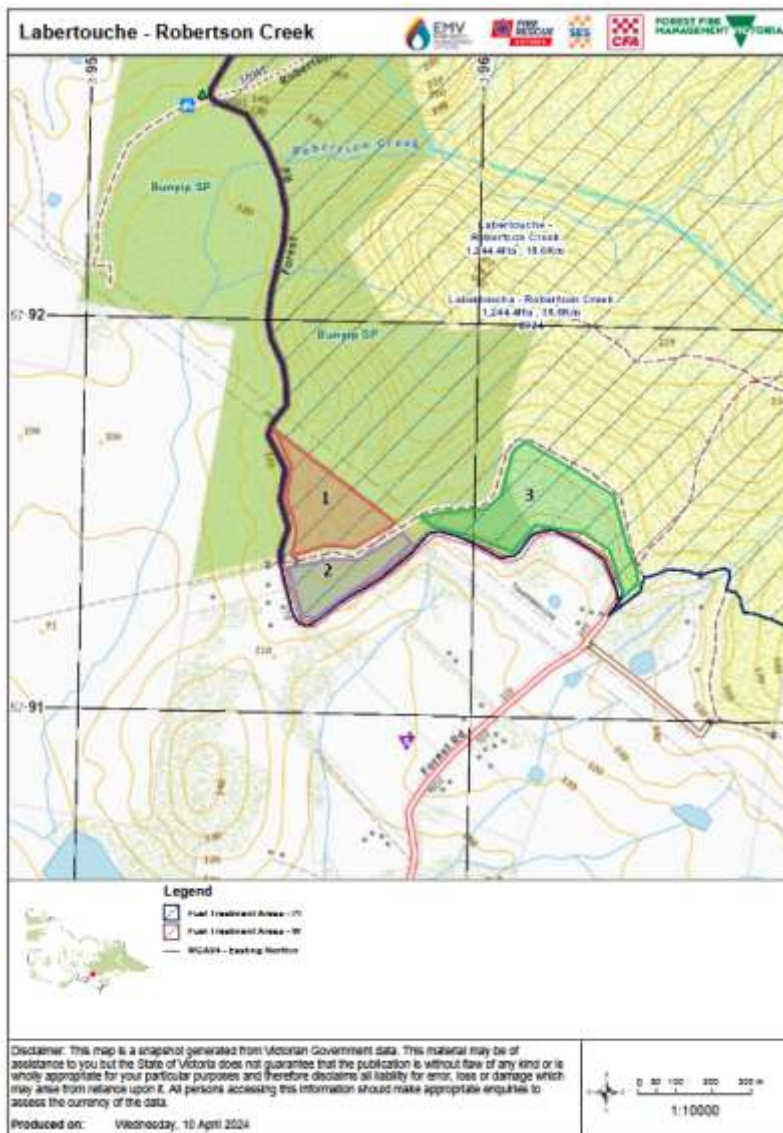
Forest Fire Management Victoria regularly plans strategic burns to reduce bushfire risk on public and private land. Over the Easter period, FFMV was busy in West Gippsland, as weather conditions were optimal.

However, the window of opportunity was brief, with more than 115mm of rain recorded since Easter. Now significant dry weather is required to recommence future scheduled burns. This includes plans for the Labertouche-Robertson Creek burn, west of Jindivick, where preparations have been completed. For now, proceeding with the next steps is dependent on the weather over late April through May.

FFMV has met with Labertouche residents and Longwarry CFA at a community meeting in March to discuss the proposed burn. FFMV is planning to treat the burn area in stages, mindful of past traumas from the 2009 devastating Black Saturday fires. The first stage of treatment will focus on asset protection, which reduces fuel in areas adjoining private property. The community map reflects this approach, and there is only a very small section of the total burn area, approximately 15 hectares. Phases 2 and 3 will be undertaken in future seasons.

Detailed operation maps are on display at the Labertouche Community House, and with local CFA brigades who are in conversations with FFMV operations planners.

If you would like to have further conversations, please reach out via help.lalrobe@delwp.vic.gov.au (Katherine Hill, Community Engagement Officer for Lalrobe)



Australia's
Biggest Morning Tea
WEDNESDAY 22nd MAY
11.30AM TO 3PM
JINDIVICK HALL

Biggest Morning Tea in Jindivick, a yummy lunch, with sweets and savoury available, trading table with Nikki's jams, sauces and cakes and slices to take home. Raffle and lucky door prize.